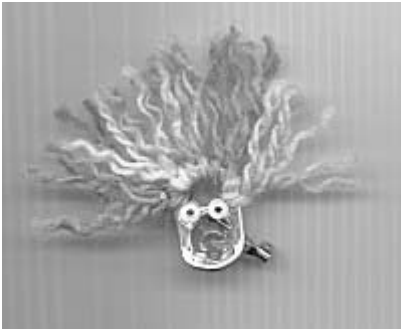


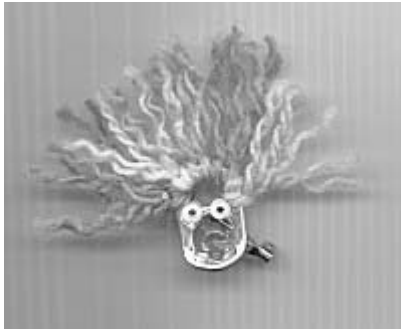
### **Frazzled Leader**

Take the pop top off of a soda can. Using a lark's head knot, tie multi-colored yarn lengths to the oval circle. Glue on wiggle eyes and a pin back.



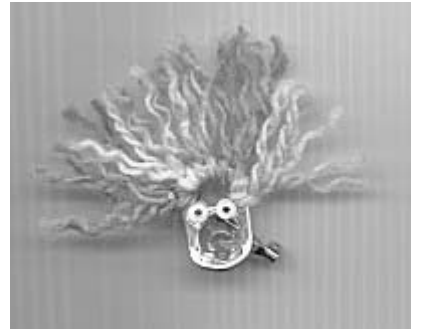
### **Frazzled Leader**

Take the pop top off of a soda can. Using a lark's head knot, tie multi-colored yarn lengths to the oval circle. Glue on wiggle eyes and a pin back.



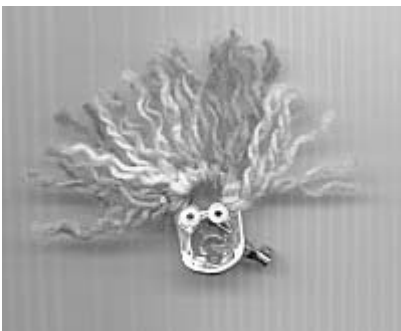
### **Frazzled Leader**

Take the pop top off of a soda can. Using a lark's head knot, tie multi-colored yarn lengths to the oval circle. Glue on wiggle eyes and a pin back.



### **Frazzled Leader**

Take the pop top off of a soda can. Using a lark's head knot, tie multi-colored yarn lengths to the oval circle. Glue on wiggle eyes and a pin back.



### **Frazzled Leader**

Take the pop top off of a soda can. Using a lark's head knot, tie multi-colored yarn lengths to the oval circle. Glue on wiggle eyes and a pin back.



### **Frazzled Leader**

Take the pop top off of a soda can. Using a lark's head knot, tie multi-colored yarn lengths to the oval circle. Glue on wiggle eyes and a pin back.



### **Frazzled Leader**

Take the pop top off of a soda can. Using a lark's head knot, tie multi-colored yarn lengths to the oval circle. Glue on wiggle eyes and a pin back.



### **Frazzled Leader**

Take the pop top off of a soda can. Using a lark's head knot, tie multi-colored yarn lengths to the oval circle. Glue on wiggle eyes and a pin back.



### **Frazzled Leader**

Take the pop top off of a soda can. Using a lark's head knot, tie multi-colored yarn lengths to the oval circle. Glue on wiggle eyes and a pin back.

